



IoT-Sig4G-D8500

Datalogger



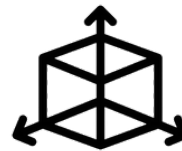
Device properties

IoT-Sig4G-D8500 is a smart IoT gateway unit with Sigfox and 4G communications. Comes with rich peripherals such as RS485, SDI-12, 4-20 mA, opto input, and relay output. IoT-Sig4G-D8500 can be used in many kinds of monitoring applications. The TFT LCD provides variety of status to be displayed.

Specification



Temperature : 0 to 60 Celsius
Humidity : 20 to 95 %RH



Dimensions: W 160 mm. x L 91 mm.
x H 62 mm. (enclosure only)

Interfaces :

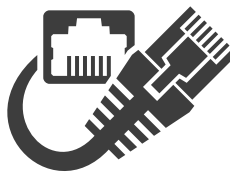
1 channel of RS485
1 channel of SDI-12
4 channels of opto digital input
4 channels of 4-20 mA analog input (16-bit ADC)
2 channels of RJ-45 Ethernet port



Display : 3.5-inch TFT LCD,
Touch Screen



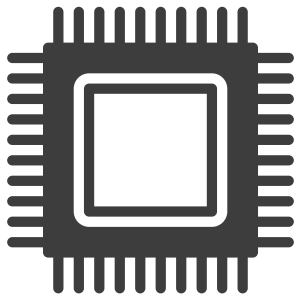
ELECTRICAL ENERGY
24V 4W
12V 4W



Communication:

Sigfox with SMA antenna
Wi-Fi with SMA antenna (for configuration)
4G LTE with SMA antenna
WAN/LAN Gigabit Ethernet

CPU Specification



CPU : ESP32-S3

CPU Clock : 240 MHz

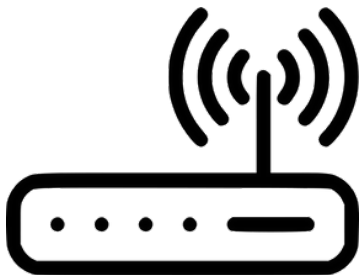
CPU Bit Processor : 32-bit processor

Memory : 8 MB

Storage : 16 MB

Operating : Non-OS

Router Specification



CPU : MT7621A 32-bit

CPU Clock : Dual-Core 880 MHz

Memory : 256 MB

Storage : 16 MB

Operating : RouterOS

Connectivity : Support 4G module interface

LTE Category : CAT1 (or better, optional)

VPN : Optional

Sigfox & Wi-Fi Specifications



Output Power : Maximum 22 dBm

Frequency : 920 - 925 MHz

Range : up to 10 km

Anti-jamming capability and spatial diversity



Protocol : IEEE 802.11 b/g/n

Frequency : 2.4 GHz - 2.5 GHz